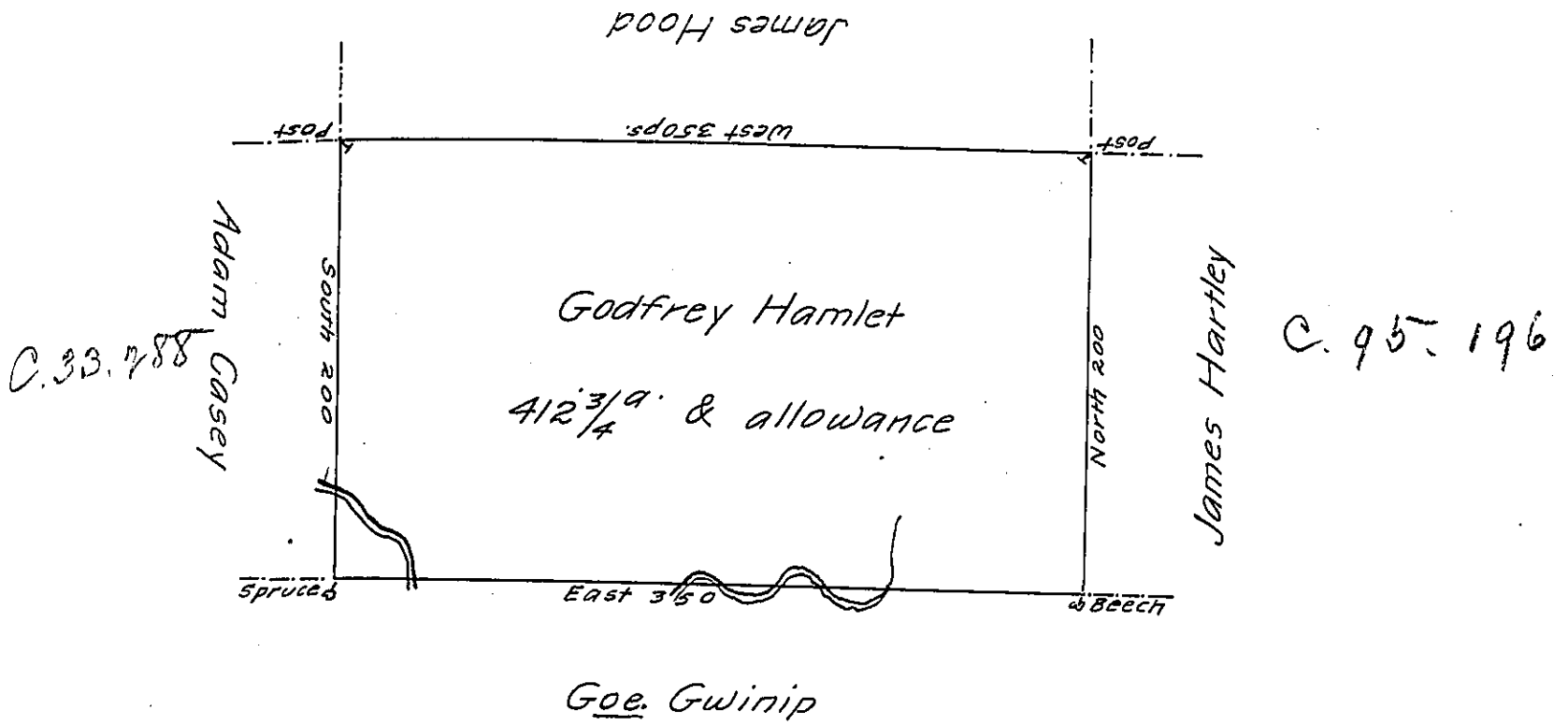


C. 95-195



*Draught of a Tract of Land Called— Situate on the Waters of Snake Creek Joining Land Survd for George Gwinip & others in Stoke Township + Northd County Containing four hundred & twobl. acres  $\frac{3}{4}$  & allowance of Six pCent. for Roads & Survd for Godfrey Hamlet the 18th. Day of Septemb<sup>r</sup>. 1784 in pursuance of a Warrant Dated the 24th. Day of August 1784.*

*by Wm. Gray D.S.*

*To John Lukens Esqr. } + now Luzerne County  
 Surv. Genl. }*

**IN TESTIMONY** that the above is a copy of the original remaining on file in the Department of Internal Affairs of Pennsylvania, made conformably to an Act of Assembly approved the 16th day of February, 1833, I have hereunto set my Hand and caused the Seal of said Department to be affixed at Harrisburg, this *fifth* day of *June* 1905

*Loac R Power*  
 Secretary of Internal Affairs.